

What's the plan?  
Your education  
and support



# What's the plan?

## Your education and support

### contents

### page

Intro

1

How can I get involved?

2

What's a learning support plan?

4

What's a CSP?

6

Have your say

8

Enquire info

back page

We hope you like this guide. We'd like to say thank you to the young people and adults who gave us their ideas and suggestions when we were writing it.

All the advice "in quotes" comes from young people.

# Enquire

THE SCOTTISH ADVICE SERVICE FOR ADDITIONAL SUPPORT FOR LEARNING

# Intro

**This Enquire guide tells you how you can have your say in decisions about what you learn at school and the support you need.**

Remember:

- you know yourself better than anyone else does
- you have the right to be involved in decisions that affect you
- by getting involved, it will help things work better for you.



call 0845 123 2303

## How can I get involved?

**You can help plan your learning. You should get the chance to talk to a teacher about what you are learning now and what you will learn next. You will have a personal learning plan to help plan your time at school.**

**If you get extra support at school, you may have a learning support plan too. You should be involved in deciding what goes in this plan.**



*"It's my choice!"*

**Learning support plans are called different things, like:**

**IEP – Individualised Educational Programme**

**ASP – Additional Support Plan**

**ISP – Individual Support Plan**

**You may also have a plan called a CSP. CSP is short for co-ordinated support plan.**

**If this is getting confusing, don't worry! The next few pages explain what you need to know.**



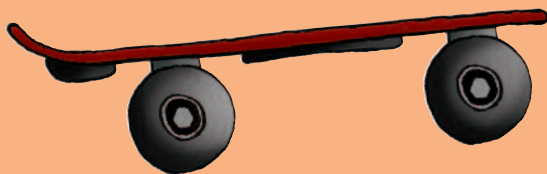
## What's a learning support plan?

**You may have a learning support plan if you get extra support at school.**

**Your learning support plan will set out the targets you're aiming for each term. It may also have the targets you're aiming for over the whole school year.**

**The plan will say what support you will get to reach these targets.**

"If you have a problem,  
speak to someone about it."



"Don't be shy to ask for help."

**You should be involved in deciding what goes in your plan.**

**You should also get to talk to your teachers every term about whether the plan is working out well for you.**



call 0845 123 2303

# What's a CSP?

**A CSP is a co-ordinated support plan. It's there to make sure all the people who support you know what's going on and work well together.**

**You may have a CSP if:**

- ☉ **you get support from people outside school (like a social worker, a speech and language therapist or a youth worker)**
- ☉ **you are in care (also called 'being looked after')**
- ☉ **you need support for longer than a year.**

**Your views have to be written down in the CSP so people know what you think.**



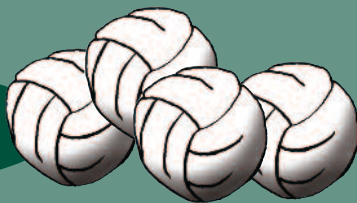


**At least once a year, the school will look at your CSP with you and your parents or carers to see how well it's working. This meeting is called a CSP review.**

**If you don't think you're getting the right support, your parents or carers (or you if you're 16 or older) can ask for a meeting sooner.**

**If you're not getting the support that your CSP says you should get, you or your parents/carers can appeal to a tribunal. You can find out more about tribunals from Enquire and at [www.asntscotland.gov.uk](http://www.asntscotland.gov.uk).**

*"Problems can be solved."*



**call 0845 123 2303**



## Have your say

**Whatever type of learning support plan you have, adults must listen to what you think is right for you.**

**One way to have your say is by going to meetings about your plan with your teachers, parents/carers and other people who support you.**

**You may feel nervous about going to meetings. Remember that you can take someone with you if you want to.**

**For more advice look at our guide *Going to meetings*. Download it from [www.enquire.org.uk/yp](http://www.enquire.org.uk/yp) or contact us for your free copy.**



PS You can get  
lots more advice  
from **Enquire** on  
our website or by  
calling us.

And remember, by  
getting involved you  
can help things work  
out better for you.



**Enquire can give you  
advice and info by  
phone, by email, online  
and in guides.**

Our guides for young people:

- ☀ Going to a new school
- ☀ Getting ready to leave school
- ☀ Going to meetings
- ☀ Need extra help at school?
- ☀ People who can help you in and out of school
- ☀ Nadia's story
- ☀ Have your say (DVD)
- ☀ Getting help with exams (online only)

Contact us for your free copies, or download  
from [www.enquire.org.uk/yp](http://www.enquire.org.uk/yp)

**Enquire is managed by Children in Scotland  
and funded by the Scottish Government**

**Children in Scotland**  
every child - every childhood



**smarter  
scotland**  
SCOTTISH GOVERNMENT

ISBN 1 901589 62 5  
© Enquire, December 2011

