

CHANGING THE ROLE OF SPECIALIST PROVISION TO SUPPORT INCLUSIVE EDUCATION



What is specialist provision?

Additional education, assessment and guidance services for learners



Further resources for schools, teachers and families

Why should we change the role of specialist provision?



Current forms of specialist provision

In-school provision

In-school provision supports learners in mainstream classrooms, or sometimes in special classes/units

External support

Specialised consultancy centres provide external support to mainstream schools and teachers

Health or welfare authorities provide direct support services to learners

Special schools

Special schools educate learners who require intensive support

Specialist provision isn't always inclusive, especially when it separates learners from their peers.

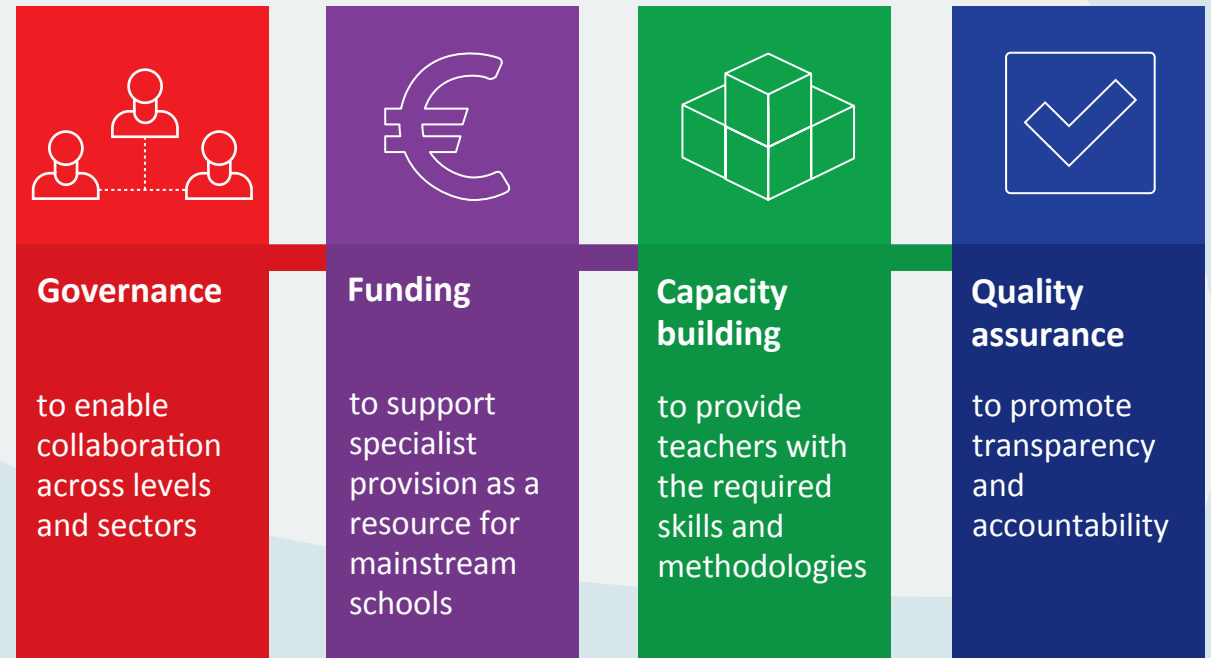
Benefits of changing the role of specialist provision

Changing its role to support inclusion in mainstream classrooms can:

- prevent learner drop-out
- improve attitudes towards diversity in learning
- help teachers gain skills to support all learners
- provide more learners with the support they need.



Education policy can drive this change in four inter-related areas:



The European Agency for Special Needs and Inclusive Education helps member countries promote these policy changes through a project called the **Changing Role of Specialist Provision in Supporting Inclusive Education (CROSP)**.

The project helps ensure schools throughout Europe can support all learners, so everyone can learn alongside their friends and peers.

Find out more by visiting www.european-agency.org/projects/CROSP

