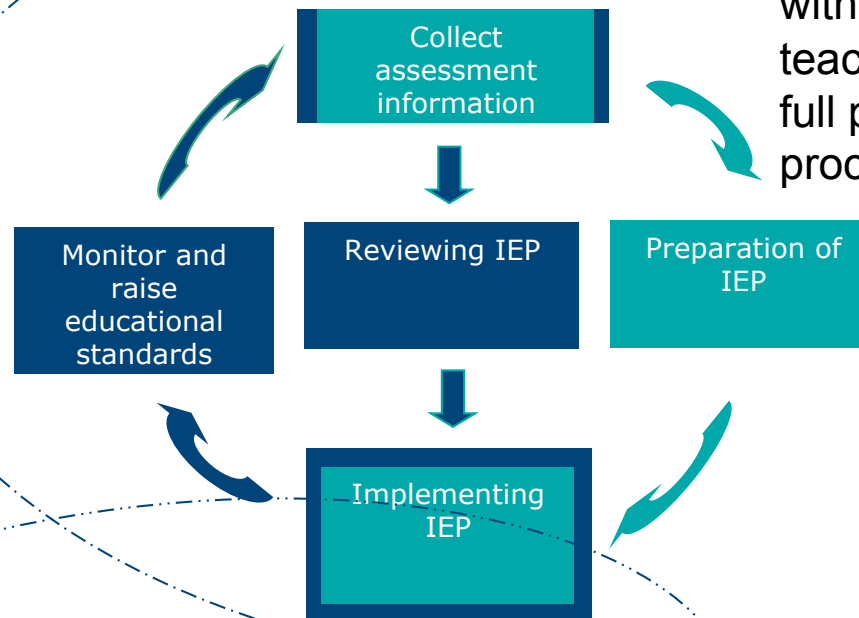


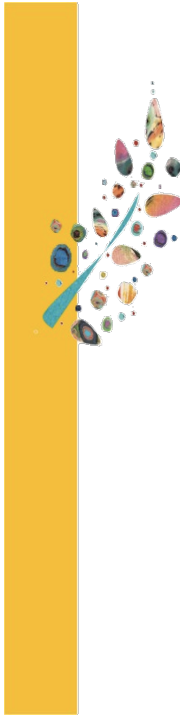
Challenging Role of Mainstream Teacher

Skills and abilities

Multi-disciplinary teams carry out initial identification assessment with mainstream classroom teachers, parents and pupils as full partners in the assessment process.



Working with individual learners as well as heterogeneous groups



Multi-disciplinary teams carry out initial identification assessment with mainstream classroom teachers, parents and pupils as full partners in the assessment process.

DIMENSIONS	COMPETENCIES
Professional and ethics	Encourages the development of students' autonomy and their full inclusion in society, taking into account the complex and differentiated the learning process
Development of teaching and learning	Promotes meaningful learning in the context of the objectives of the class curriculum, developing core competencies
Participation in school	Promotes interactions with families, particularly in the context of life projects and training of their students
Professional development and training	Reflect on their practices, relying on experience, research and other resources relevant to the assessment of their professional development, particularly in their own training project

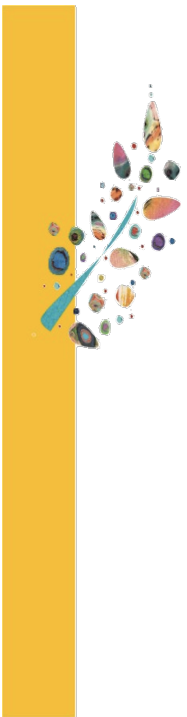


Competência

→ Faculty of mobilizing a set of cognitive resources (knowledge, skills, information, etc.). To resolve a relevant and effective range of situations.

→ Ability to respond positively to a demanding, complex task or problem, mobilizing and combining resources and personal context

→ Action - Knowledge – Personal/social competencies



Improving education outcomes of students

Quality of learning

Personal and professional development within a system of recognition of merit and excellence