

Minor: Inclusive Education



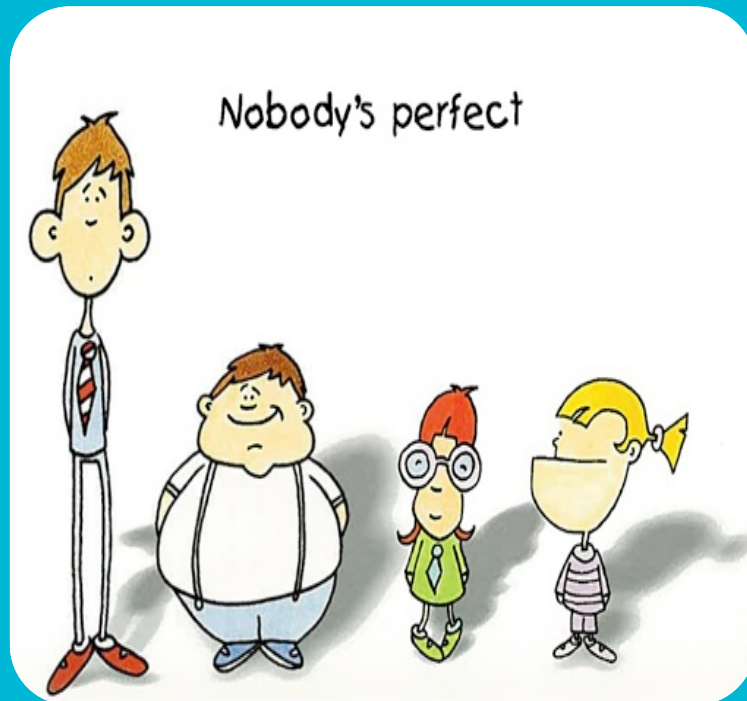
Today's presentation

Minor Inclusive Education

- Why and How?

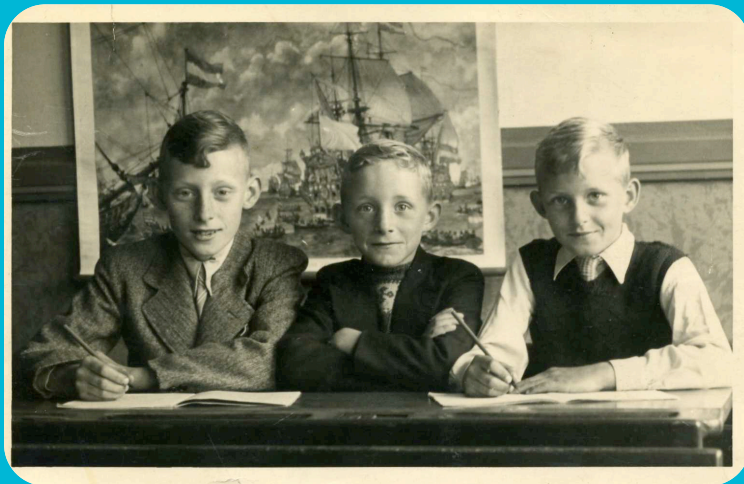


Why?



1. Changing classroom population
3. Changing Policy

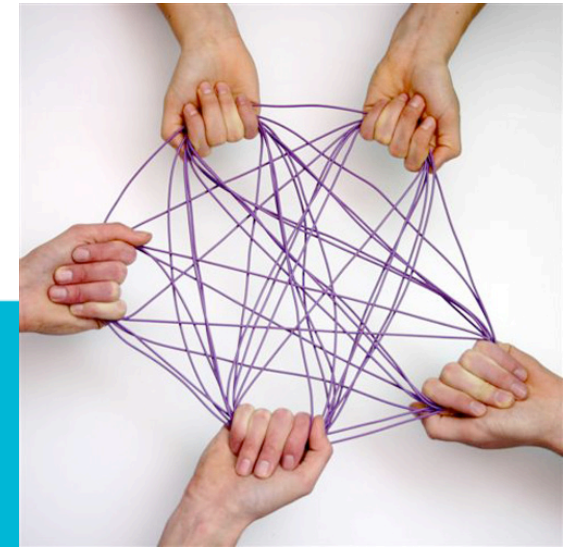
Changing classroom population



- Training of teachers to become equipped
- Attitude towards inclusive education

Policy

- Improving the quality of education and building regional networks for a better organisation of education and youth care.
- The aim of these recommendations of the government is offering education that match the abilities and talents of all students.
- 'Adaptive education '
- *Bringing the support services to the child instead of bringing the child to the support services*



Focus minor

- Students develop an attitude towards inclusive education and
- Students observe and work with pupils with special educational needs

❖ Attitude

❖ Skills

How?



Program:

- 6 month internship
- 2 days a week



- Workgroups
 - Guest speakers
 - School visits
-
- ❖ Literature study
 - ❖ Developing an attitude towards inclusive education
 - ❖ Looking into the school support system
 - ❖ Presentations
 - ❖ Exam

Action research



‘Teachers in their own mirror’

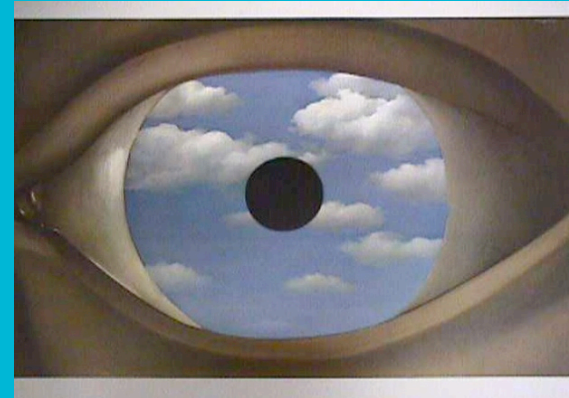


In what way are two of these people most alike? (and different from the third)



‘Teachers in their own mirror’

- A reflective method offering teachers more insight into their own thoughts and actions, particularly with regard to pupils who, by their behavior, lay a big claim on the teacher.



Questions

- "How are competence profiles being used or considered in our example?"
- "What policy frameworks for *teacher* education are needed for such a profile to be implemented?"
- "What policy frameworks for *inclusive* education are needed for such a profile to be implemented?"